



NAGOMI



# WALL TILE

## SABI

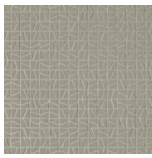
---



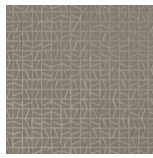
Crayon



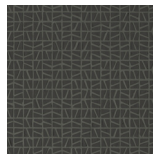
Sand



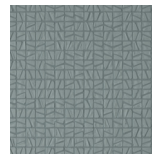
Fog



Soot



Basalt



Dove



Red Earth

## Riku

---



Crayon



Sand



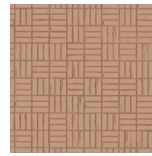
Fog



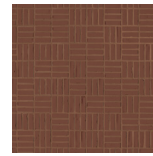
Soot



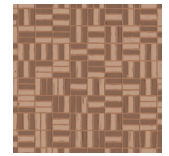
Basalt



Pale



Red Earth



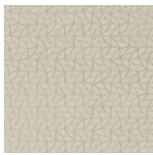
Mix (Red Earth & Pale)

## Kazuki

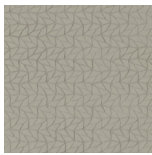
---



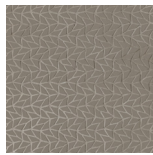
Crayon



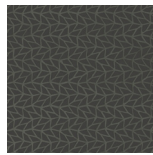
Sand



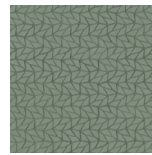
Fog



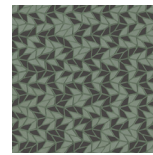
Soot



Basalt



Greenish



Mix (Basalt & Greenish)

## Miyu

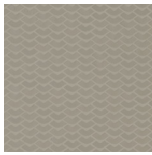
---



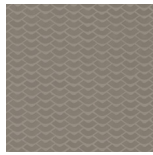
Crayon



Sand



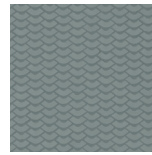
Fog



Soot



Basalt



Dove



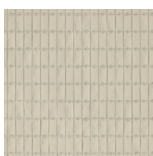
Mix (Crayon, Sand & Fog)

## Ami

---



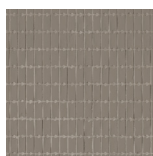
Crayon



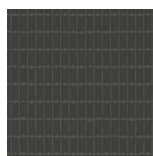
Sand



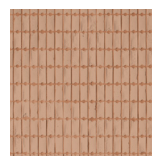
Fog



Soot



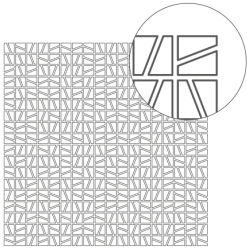
Basalt



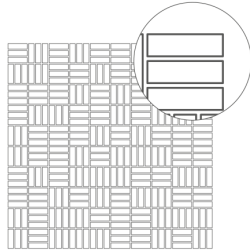
Pale

## AVAILABLE SIZE

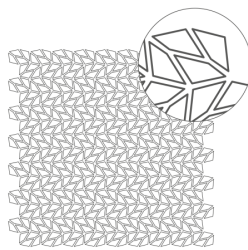
---



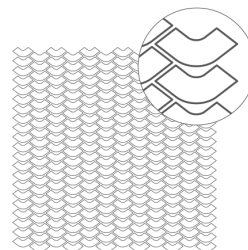
12" x 12"  
Sabi



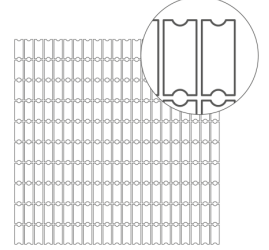
12" x 12"  
Riku



12" x 12"  
Kazuki



12" x 12"  
Miyu



12" x 12"  
Ami

## FINISH

---

MATTE WALL TILE

## THICKNESS

---

2mm

## INSTALLATION & MAINTENANCE

---

Recommended Grout Size - 3/16"

For regular cleaning, use a neutral liquid detergent with a soft sponge or microfiber cloth. Persistent stains can be removed with a slightly abrasive sponge; if necessary, use a specially formulated stain remover.

## TECHNICAL DATA

---

