



KINTSUGI



# COLOR BODY PORCELAIN TILE

## COLORS



Moonlight



Fog

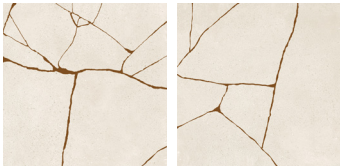


Darkness

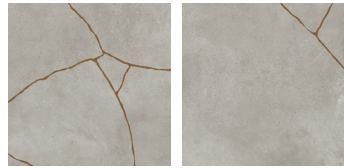


Storm

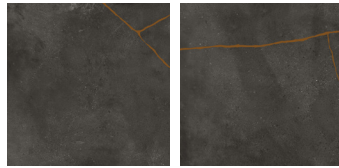
Colors ONLY available in 24"x48", 36"x36", 24"x24" & 8" x 8" in Matte Rectified Finish



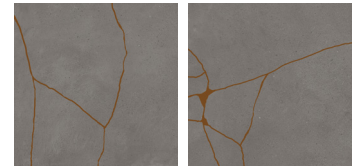
Moonlight Hibi



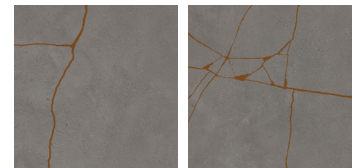
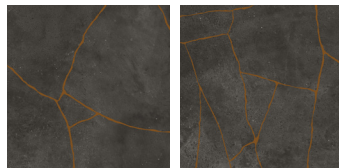
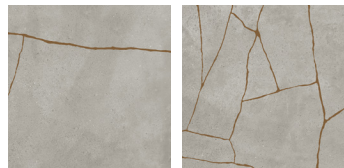
Fog Hibi



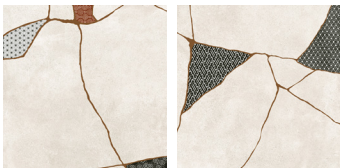
Darkness Hibi



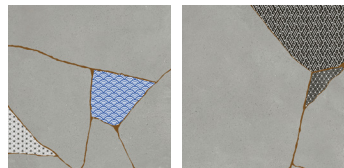
Storm Hibi



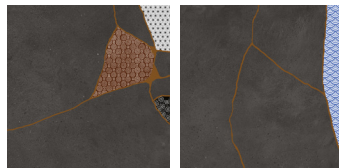
Hibi colors ONLY available in 24"x48" & 24"x24" in Matte Rectified Finish



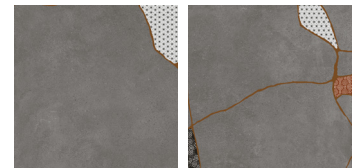
Moonlight Japan Hibi



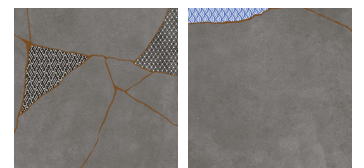
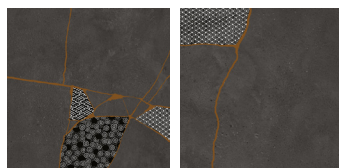
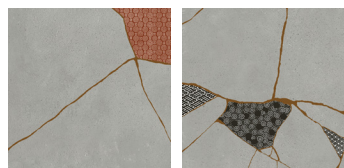
Fog Japan Hibi



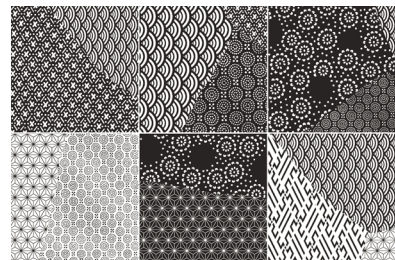
Darkness Japan Hibi



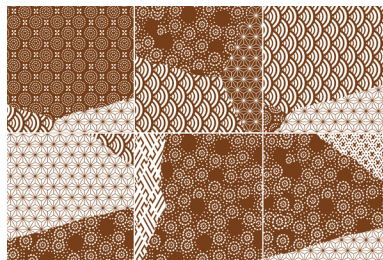
Storm Japan Hibi



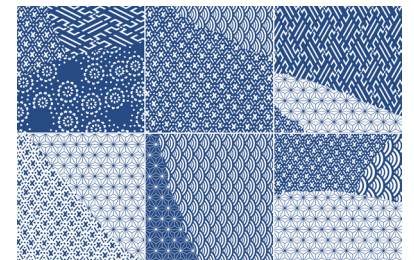
Japan Hibi colors ONLY available in 24"x24" in Matte Rectified Finish



B&W Japan Mix

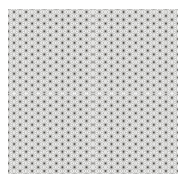


Rust Japan Mix

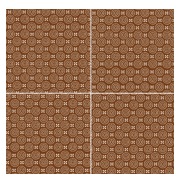


Blue Japan Mix

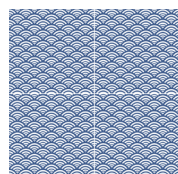
Japan Mix colors ONLY available in 8"x8" in Glossy Rectified Finish | 18 Assorted Subjects



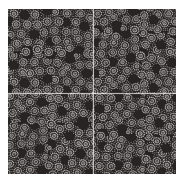
White Japan



Rust Japan



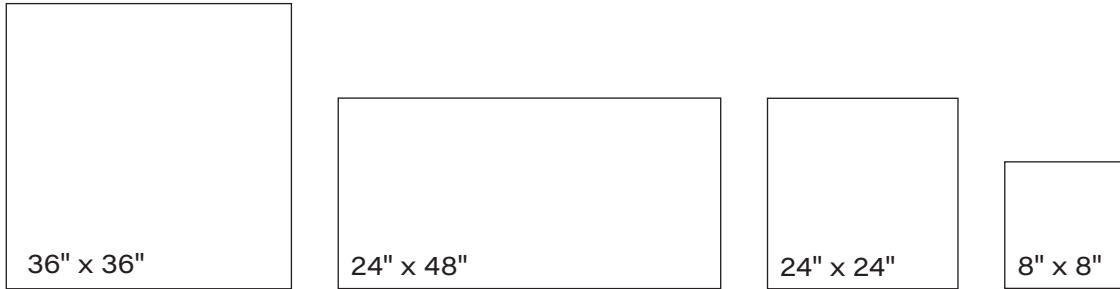
Blue Japan



Black Japan

Japan colors ONLY available in 8"x8" in Glossy Rectified Finish

## AVAILABLE SIZES



## FINISH

MATTE RECTIFIED  
GLOSSY RECTIFIED

## THICKNESS

10mm

## TRIM

3" x 24" Bullnose

## INSTALLATION & MAINTENANCE

Recommended Grout Size - 1/8"

For regular cleaning, use a neutral liquid detergent with a soft sponge or microfiber cloth. Persistent stains can be removed with a slightly abrasive sponge; if necessary, use a specially formulated stain remover.



## TECHNICAL DATA

<p><b>V2-V4</b></p> 	<p>D.C.O.F. WET</p> <p><b>&gt; 0.40</b></p> <p>ANSI 137.1</p>	<p>WATER ABSORPTION</p> <p><b>≤ 0.5%</b></p> <p>ISO 10545-3</p>	<p>CHEMICAL RESISTANCE</p> <p><b>GB</b></p> <p>ISO 10545-13</p>	<p>FROST RESISTANCE</p> <p><b>RESISTANT</b></p> <p>ISO 10545-12</p>	<p>BREAKING STRENGTH</p> <p><b>1300 N</b></p> <p>ISO 10545-4</p>	<p>STAIN RESISTANCE</p> <p><b>CLASS 3</b></p> <p>ISO 10545-14</p>
---	---	---	---	---	--	---

